

Ramky Lumina

New Launch Project Snapshot

Project Introduction

- Project: Ramky Lumina
- Segment: Premium Residential
- Location: On Hosa Road, Sarjapura, Bengaluru!
- Google Location: <https://maps.app.goo.gl/ivLZjViqGRBdG8cL7>
- Nearest Landmark: PES UNIVERSITY

- Structure: Mivan construction
- Land Area: 7acres
- Blocks: 3, No. of Towers: 6 (Each/ 2B+G+14) with 2 Lifts per Tower
- Total Units: 729nos.
- Type: 1BHK, 2BHK & 3BHK

Key USP

- **Prime Location:** Situated near ****Hosa Road**** and **** Sarjapur****, with seamless connectivity to IT corridors, Sarjapur, Electronics City, Koramangala & NICE road / Metro Connectivity.
- **Luxury & Space:** "King-size living" concept with spacious, well-designed apartments and 80% dedicated open spaces.
- **Comprehensive Lifestyle:** Combines urban convenience (schools, hospitals, offices) with resort-like amenities (clubhouse, pools, sports facilities) for all age groups.

Artistic Impression



Configurations & Pricing

- 1 BHK* (615 sq.ft to 985 sq.ft) – ₹55 Lakhs Onwards*
- 2 BHK* (1,040 sq.ft to 1278 sq.ft) – ₹90 Lakhs Onwards*
- 3 BHK* (1,311 sq.ft & 1,533 sq.ft) – ₹1.05 Cr Onwards*

*Note the above price is excluding of FRC & PLC...

Launching A,B & C Towers

Tentative possession timelines

- A & C possession within 12 months
- B & F possession within 24 months
- D & E possession within 36 months

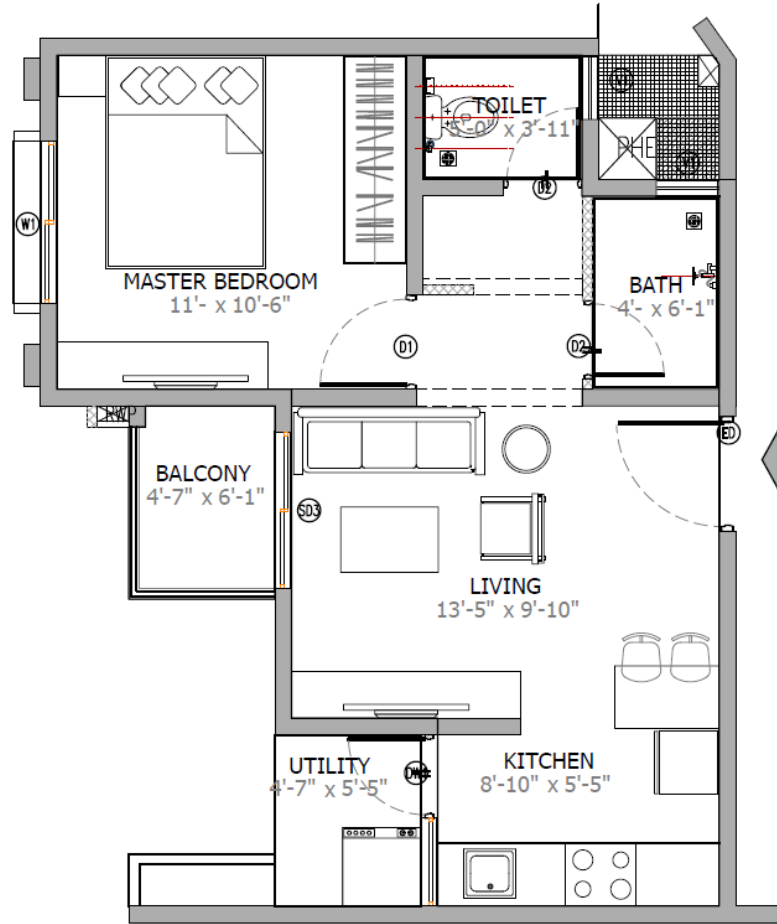
MasterPlan



Site Plan Legend Showing Outdoor Amenities:

- | | | |
|-----------------------------------|---|------------------------------|
| 01 Main Entry And Exit | 11 Tree Court And Seating Area | 21 Yoga Lawn |
| 02 Security Cabin | 12 Lilly Pond | 22 Practice Basketball Court |
| 03 Entrance Plaza | 13 Elders' Exercise Zone And Tree Court | 23 Park |
| 04 8m-wide Drive Way | 14 Tot Lot | 24 Giant Chess Arena |
| 05 Maidan And Open Air Theatre | 15 Practice Tennis Court | 25 Multipurpose Court |
| 06 Jogging Track/Pathway | 16 Sand Pit/ Childrens' Play Area | 26 Hopscotch Area |
| 07 Cricket Pitch For Net Practice | 17 Viewing Galleries | 27 Visitors' Car Parking |
| 08 Main Swimming Pool | 18 Cycling Loop | 28 Ramp |
| 09 Kid's Pool | 19 Bicycle Parking | |
| 10 Water Feature | 20 Skating Rink | |

1BHK (SBUA: 615sq.ft)

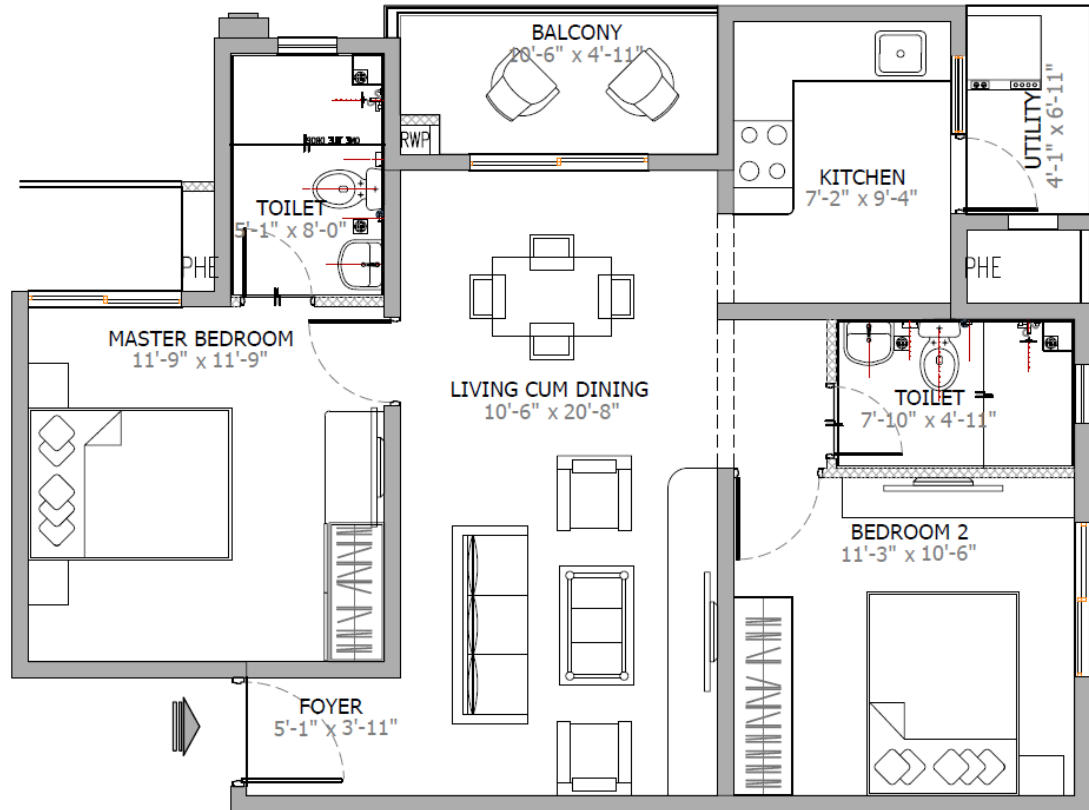


	SQM	SQ FT
UNIT CARPET AREA	36.32	390.95
UTILITY AREA	2.29	24.65
BALCONY	2.558	27.53

UNIT TYPE 1-1BHK (1BHK+1T+1BATH)

SBUA : 615 Sft

2BHK (SBUA: 1040sq.ft)

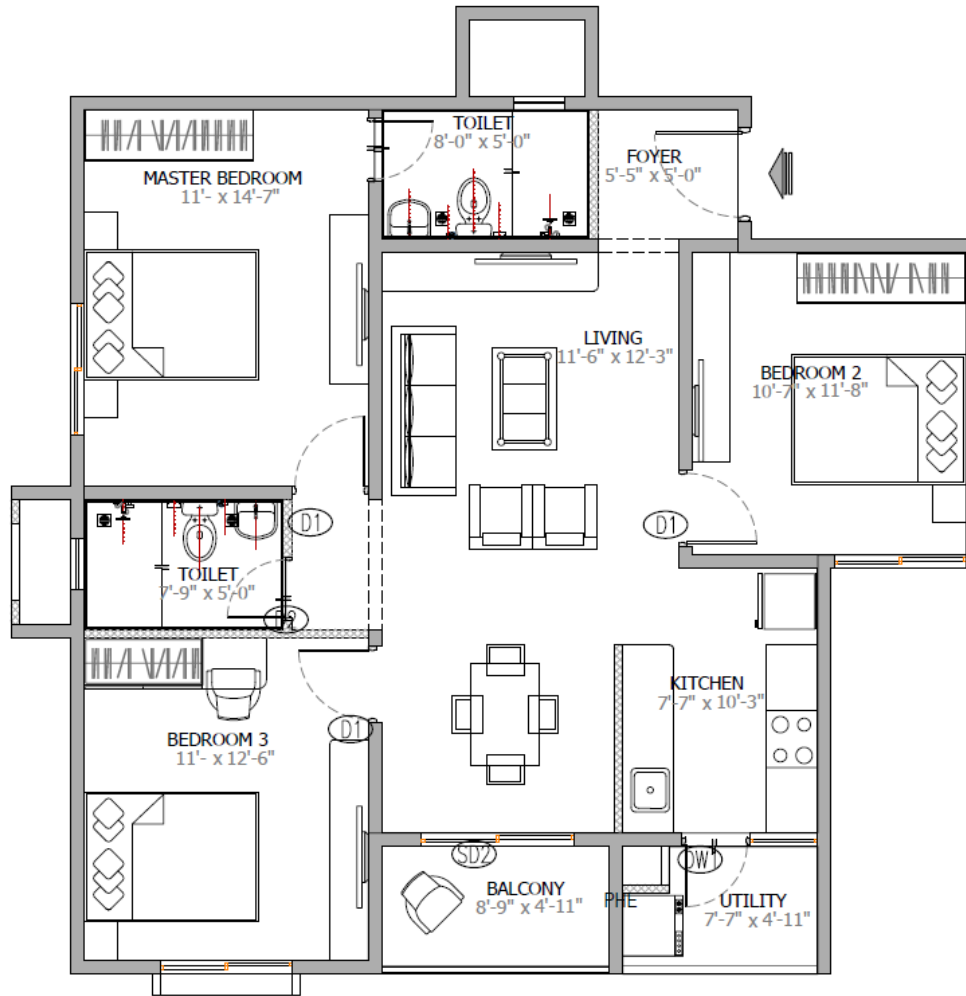


	SQM	SQ FT
UNIT CARPET AREA	63.92	688.03
UTILITY AREA	2.625	28.26
BALCONY	4.69	50.48

UNIT TYPE 7 (2BHK+2T in Tower A) (2B+2T in Tower B)

SBUA : 1040 Sft

3BHK (SBUA: 1311sq.ft)



UNIT TYPE 14 (3B+2T)

SBUA : 1311 Sft

	SQM	SQ FT
UNIT CARPET AREA	83.42	897.93
UTILITY AREA	3.15	33.91
BALCONY	4.01	43.16

THANK YOU